

galerie dohyanglee

WORKS //  
BORIS KURDI

Boris Kurdi is interested in the intentional forces we display on images and objects and their fabrication context inside the art and the society. The iconographic universe of his artworks comes from many worlds, such as enterprise and tertiary sector as childhood world, from engineering, and specially history.



Drawing seems to plunge us into the educational universe. The format recalls a school board, but also the use of dry pastel and the underlining of a spelling mistake as well as the writing in « attached ». The sentence written on the work is « la conformité du présent produit à la norme française », an inscription of the Stabilo brand written on boxes of coloured pencils. For the artist the interest of this nominal phrase is the use of polysemic terms such as « conformity », « present », « product », « standard », « French », and that it contains poetic power. The use of the paper used for the photo studio background is reminiscent of photography, thus capturing a precise moment. We note that the background is composed of the colors red, black, yellow, those of the German flag, and that a small map of France, as seen in the Vidal Lablache atlas, used for school purposes.

**Untitled**

2022

Diptych, mixed media on paper glued 1 mm aluminium dibond, 72 x 218 cm  
Unique piece



detail



detail



**Untitled**

2019

Sculpture, eraser, cardboard chocolate box, 15 cm high x 4 cm diameter  
Unique piece



It is a bust of Napoleon Bonaparte made with a used eraser cut and a cardboard box of Mozartkugel (Austrian chocolates). It is a heterogeneous assemblage, poor and ironic given the history between Napoleon and Austria, a country he faced and invaded in 1809. Napoleon was known to appreciate the music of Mozart, even if he preferred that of Paisiello. Speaking of music, the artist evokes a music sung by France Gall *Ein Bisschen Goethe Ein Bisschen Bonaparte* where she praises the merits and proclaims the defects of these two characters while speaking of an ideal man who possesses the qualities of these two men.



The three images show the notion of difficulty, a kind of precarious balance between a blue-headed chickadee upside down, a black bird fighting against the wind, and a mechanical structure in suspension. This notion of difficulty can be found in the text of the exhibition's press release.

The frames combine living matter through the use of shagreen or fish leather, a polished fish skin, and wooden frames, composed of rounded chopsticks to soften the lines and make them more organic. The texture of the shackle attracts the gaze by the brilliance and geometric form such as a Voronoi diagram or water foam.

The image of the chickadee is reminiscent of Dürer's *Temptation of Saint Anthony*.

**Untitled**

2022

Wood frame sculpted by the artist, shagreen, pastel and printing on glossy photo paper, 25 x 31,2 x 3,5 cm  
Unique piece



**Shagreen**  
2022

Wood frame sculpted by the artist, shagreen, pastel and printing on high reflexion photo paper, 31,2 x 25 x 3,5 cm, unique piece



The three images show the notion of difficulty, a kind of precarious balance between a blue-headed chickadee upside down, a black bird fighting against the wind, and a mechanical structure in suspension. This notion of difficulty can be found in the text of the exhibition's press release.

The frames combine living matter through the use of shagreen or fish leather, a polished fish skin, and wooden frames, composed of rounded chopsticks to soften the lines and make them more organic. The texture of the shackle attracts the gaze by the brilliance and geometric form such as a Voronoi diagram or water foam.

The image of the chickadee is reminiscent of Dürer's *Temptation of Saint Anthony*.

The central photo is a metaphor of the aquarium, the machinery used to filter the water, the fish washing glass that leave white traces (which can be observed in the photo).



The three images show the notion of difficulty, a kind of precarious balance between a blue-headed chickadee upside down, a black bird fighting against the wind, and a mechanical structure in suspension. This notion of difficulty can be found in the text of the exhibition's press release.

The frames combine living matter through the use of shagreen or fish leather, a polished fish skin, and wooden frames, composed of rounded chopsticks to soften the lines and make them more organic. The texture of the shackle attracts the gaze by the brilliance and geometric form such as a Voronoi diagram or water foam.

As for the image of the bird with black plumage, the gloss enhanced by the black resonates with the grey hue and brilliance of the shagreen.

**Untitled**

2022

Wood frame sculpted by the artist, shagreen, pastel and printing on glossy photo paper, 25 x 31,2 x 3,5 cm  
Unique piece



The Bic ballpoint pen is like the leitmotif of this exhibition. The pen is an interesting tool that allows you to share your thoughts, but it is widely used around the world. We note that the development of this tool follows that of the space conquest during the 20th century. The maneuverability and reliability of this tool allow it to be used in spaceships, without taking into account the gravitational imperative, unlike the pen. Black is the colour of outer space, dominating the posters. The enlarged, blurred and dynamically arranged pens remind us of spaceships by their shape or creatures from the underwater abyss. *Astigmatism in my soul* refers to a vision problem, which is a deformation of the cornea of an eye. Therefore the seen shapes are distorted in relation to normal vision.

**Astigmatism in my soul**

2022

Pigment printing on blue back paper, 70 x 100cm, unique piece (presentation)

2022

Lambda color printing on glossy RC paper, 71 x 100cm, unique piece



The Bic ballpoint pen is like the leitmotif of this exhibition. The pen is an interesting tool that allows you to share your thoughts, but it is widely used around the world. We note that the development of this tool follows that of the space conquest during the 20th century. The maneuverability and reliability of this tool allow it to be used in spaceships, without taking into account the gravitational imperative, unlike the pen. Black is the colour of outer space, dominating the posters. The enlarged, blurred and dynamically arranged pens remind us of spaceships by their shape or creatures from the underwater abyss. Is it a chalk under a school slate board, is it a resting ship?

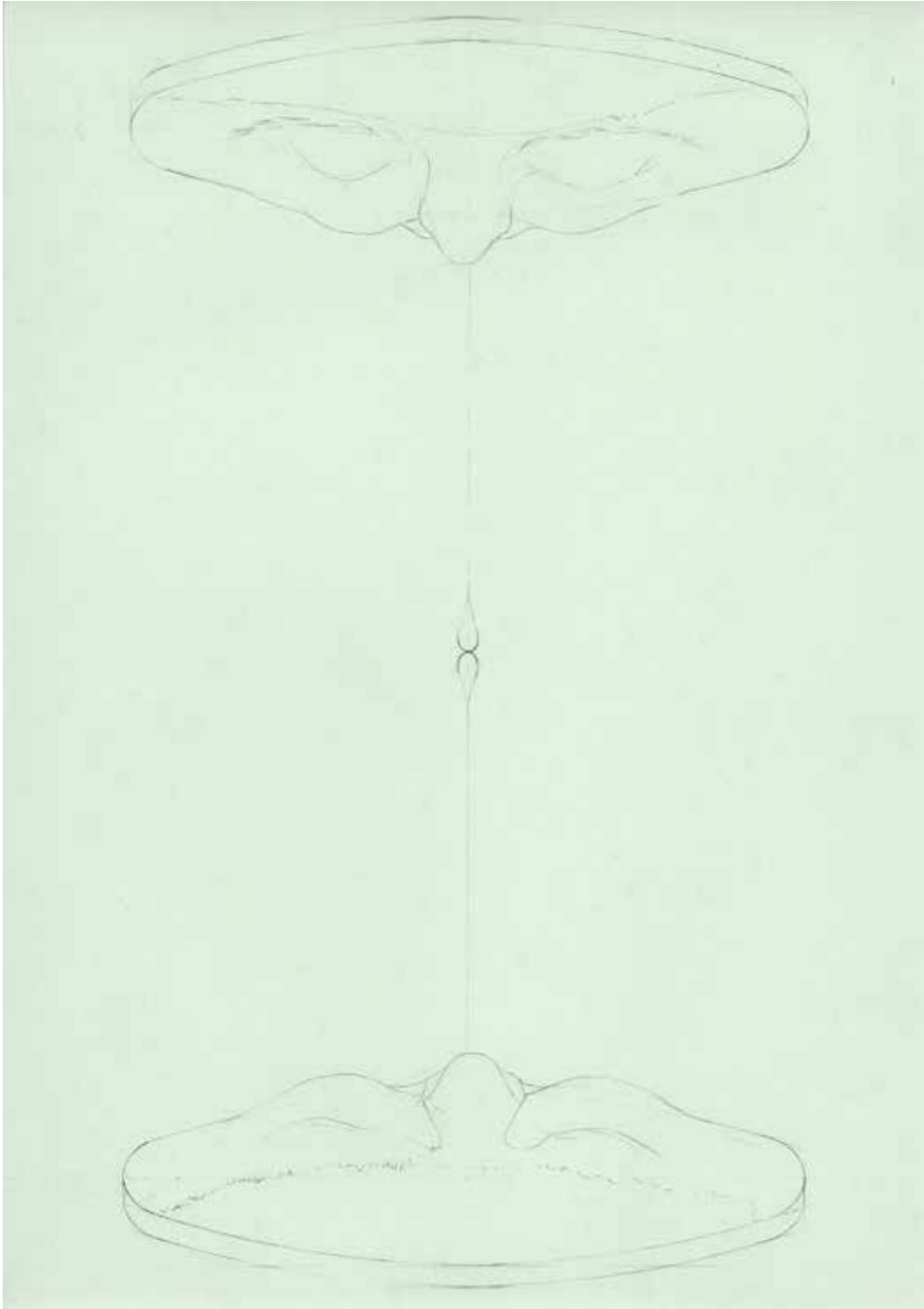
**Untitled**

2022

Pigment printing on blue back paper, 70 x 100cm, unique piece (presentation)

2022

Lambda color printing on glossy RC paper, 71 x 100cm, unique piece



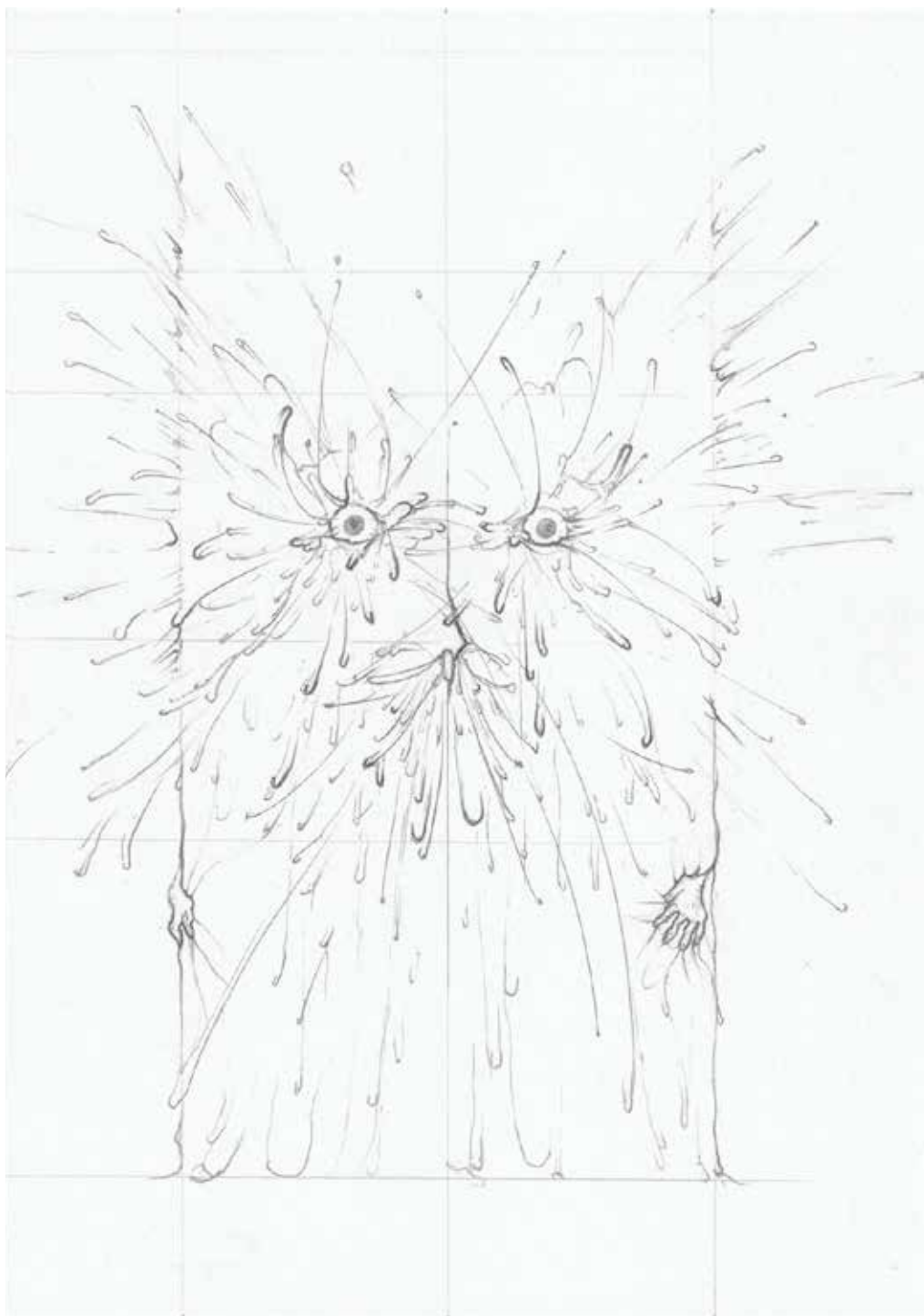
The drawings of modest size were chosen freely. Two drops that flow from two faces in bas-relief face to face, as in a mirror, meet in the centre. It is the evocation of the ink of the ballpoint pen.

**Untitled**

2020

Graphite on green draft paper, 21 x 29,7cm

Unique piece



The drawings of modest size were chosen freely. The sheet of paper trembles, and the sweat that beads looks like ink. All round, spherical eyes look like pen balls.

**Untitled**

2020

Graphite on paper, 15 x 10,5 cm

Unique piece



The drawings of modest size were chosen freely. Two characters each buried in a glass bead smile in an evil way and face each other. They overlook a landscape in the distance. The artist is inspired by the overall composition of the painting Albrecht Dürer's *The Great Fortune*. The notions of randomness, chance but also paradoxically of perfection are associated with the sphere.

**Untitled**

2020

Graphite and colored pencils on green draft paper, 21 x 14,5 cm

Unique piece



**Untitled**

2022

Lambda color printing on glossy RC paper, 98,7 x 69,4 cm  
Unique piece



The photo shows a Bic pen tilted towards the viewer; the base of the pen at the bottom, and the ball in the center of the photo. This photo shows the subjective view of the ball when holding the pen yourself. The ambient blur reinforces the focus on the central ball. The photo has a character that could be interpreted as paranormal because we do not know who and especially how the pen holds in balance. The artist readily quotes the poem *Magie 1* by Henri Michaux to speak of a concentration effort, via contemplation. The poem *La Vue* by Raymond Roussel shows such a movement according to curator François Piron and artist Sarah Holveck.



Animation realized with Theo Chabolle. The ballpoint pen was animated so that it follows the contours of the wall, it is thus an animation in situ. The artist evokes the philosophical tale *Micromégas* by Voltaire, for the passage within a same story between very different scales. The tip of the pen, as it progresses, changes from the globe to an eyeball, which turns into a sun and ends with a ball of pen. The contemplative aspect is important. We can also refer to Saint Exupéry's *Little Prince*, because he visits many planets of different sizes during his journey, content with a relatively passive, meditative role. The black background refers to space, and the pen to some kind of spaceship, as in 2001, the *Space Odyssey*. The eye is reminiscent of Steven Spielberg's film *Minority Report*, the Sun/Earth alternation to the animated film *The King and the Bird*.

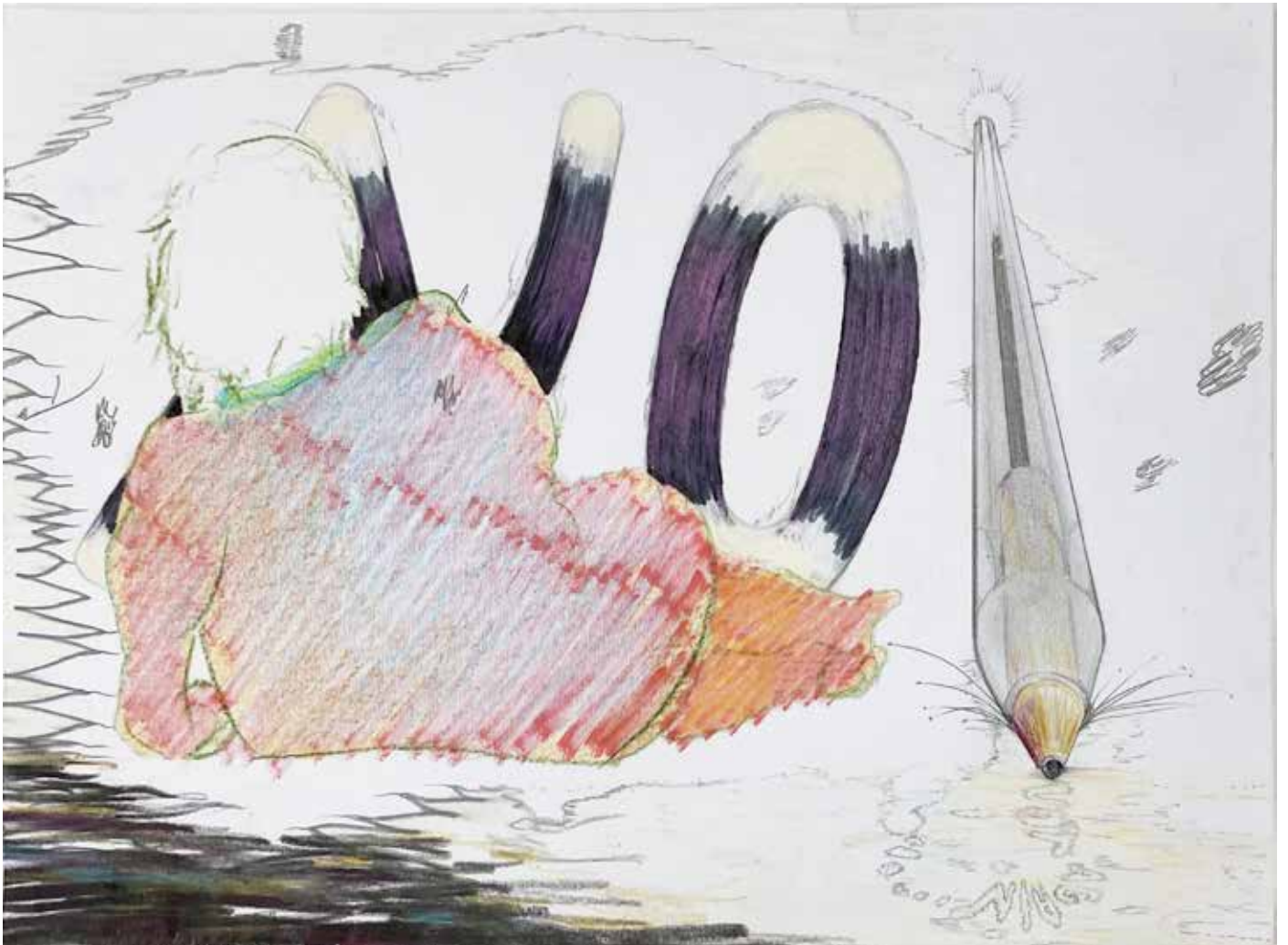
**Try**

2022

Video installation in situ (according to the location), 3D animation by Théo Chabolle and Boris Kurdi, loop, color, mute, 0'55", edition of 6 + 2 AP





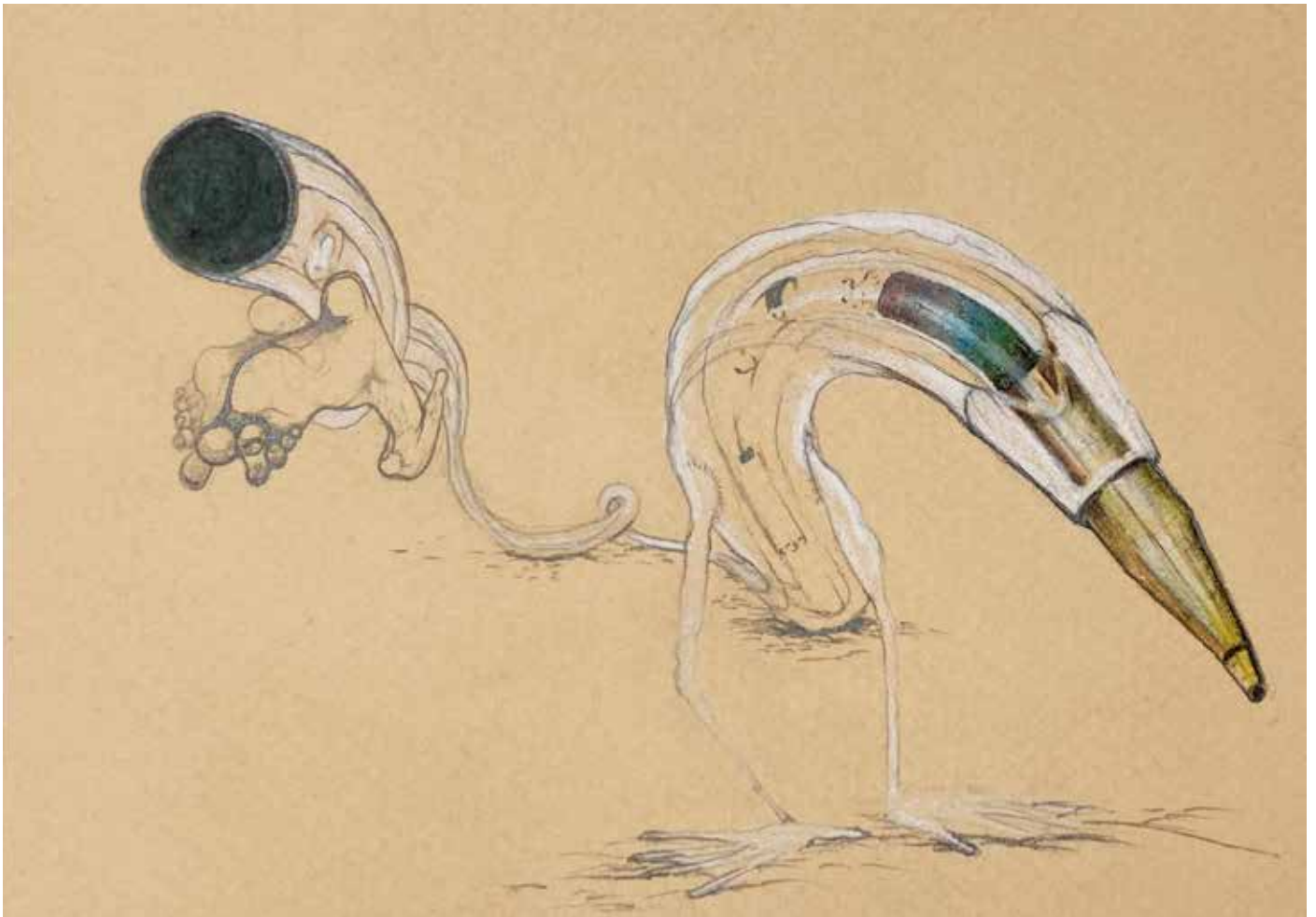


**Untitled**

2020

Graphite, coloured pencils, pen on paper, 14,7 x 21,7 cm

Unique piece



**Jamais voir la lune**

2021

Graphite, coloured pencils, pen on orange paper, 9,5 x 14 cm

Unique piece

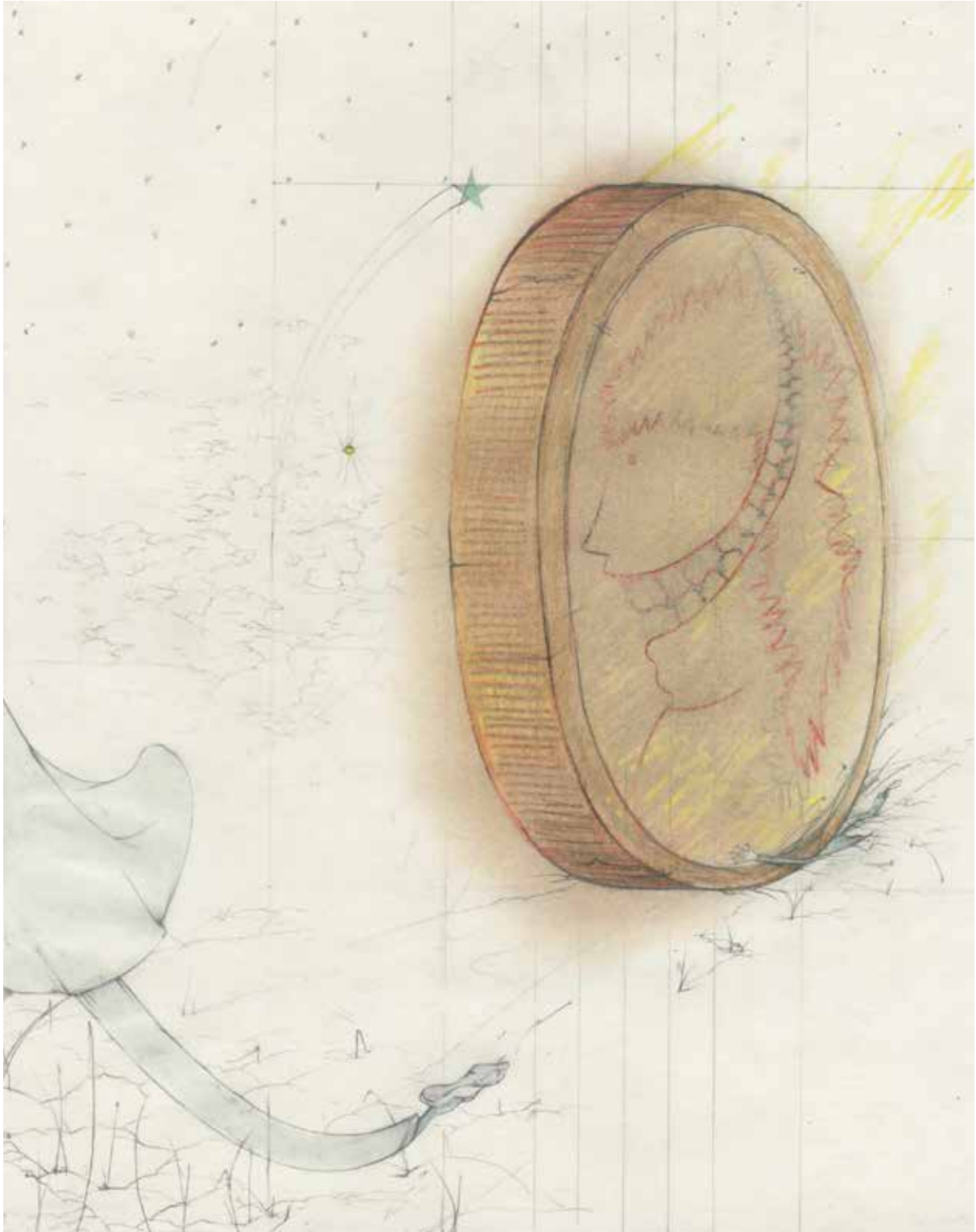


**J'ai trois univers**

2020

Graphite, coloured pencils, pen on paper, 14,7 x 20,8 cm

Unique piece



**Untitled**

2018

Graphite, coloured pencils on paper and pencil, 42 x 30 cm

Unique piece





**Untitled**

2018

Ink and graphite, coloured pencils and pencil on paper, 42 x 30 cm

Unique piece



**Untitled**

2018

Graphite and coloured pencils on paper, 30 x 20,9 cm

Unique piece

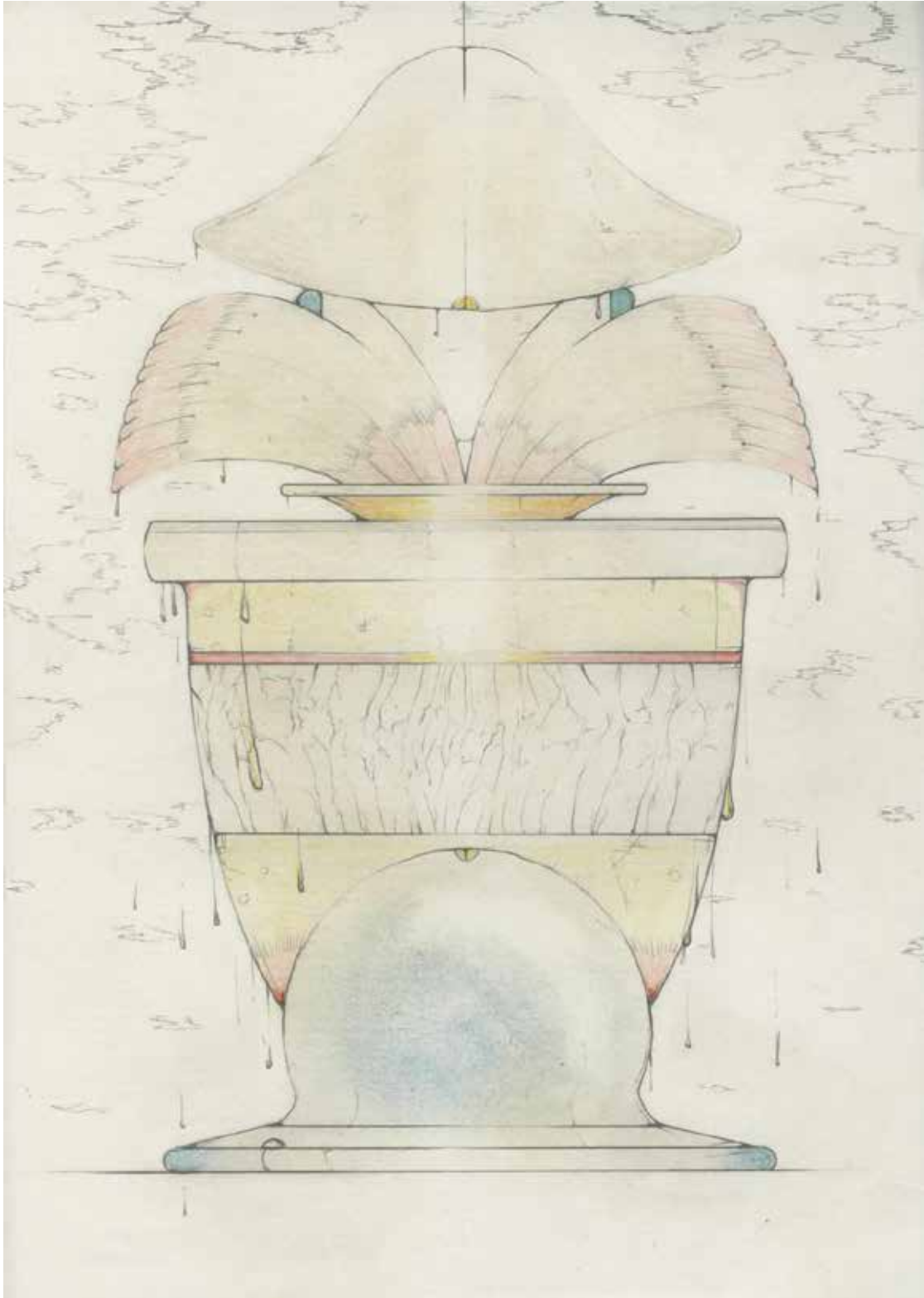


**Untitled**

2020

Mixt techniques on paper, 29,5 x 20,7 cm

Unique piece



**Untitled**

2018

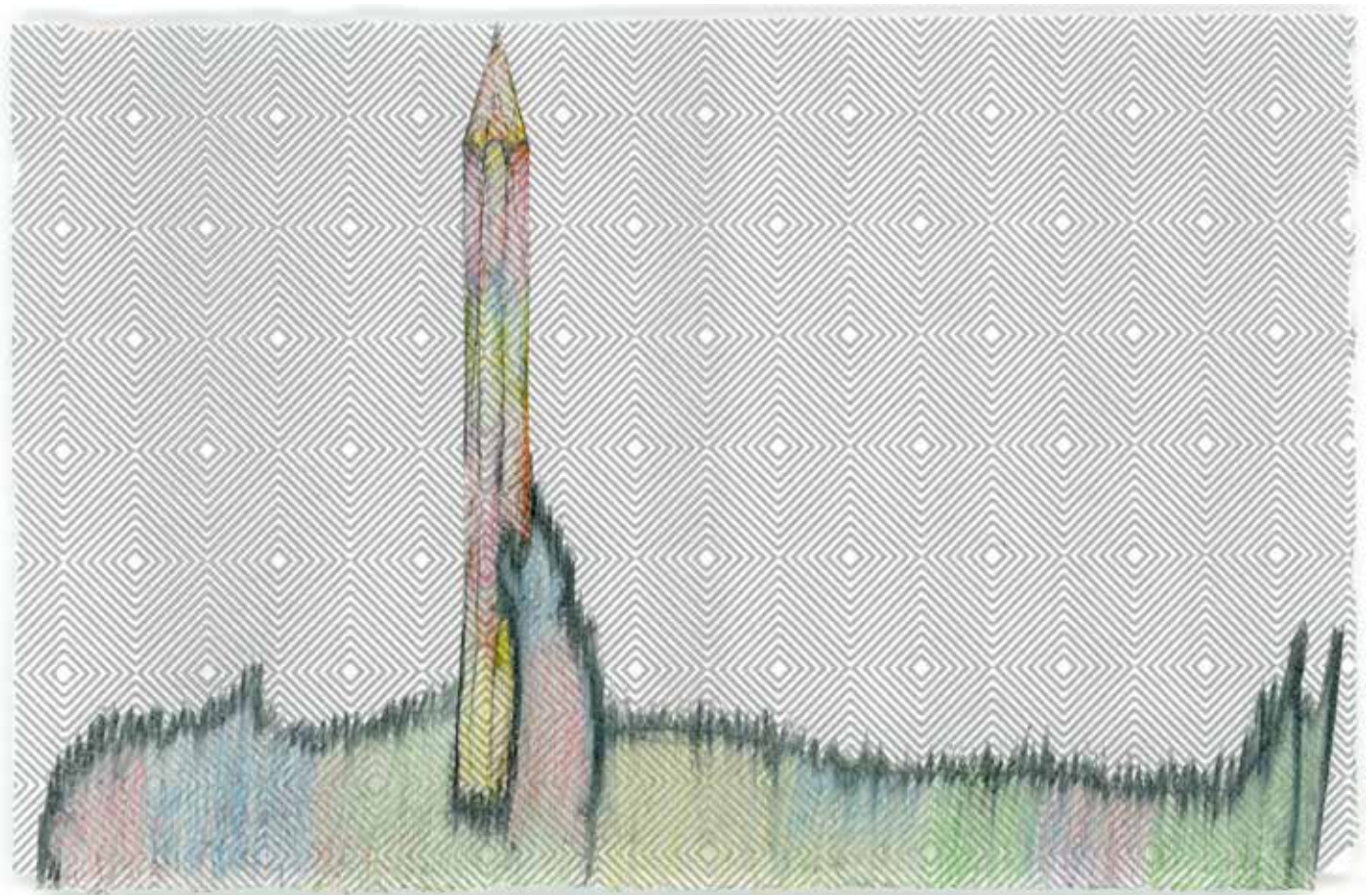
Graphite and coloured pencils on paper, 29,5 x 21 cm  
Unique piece



**Untitled**

2018

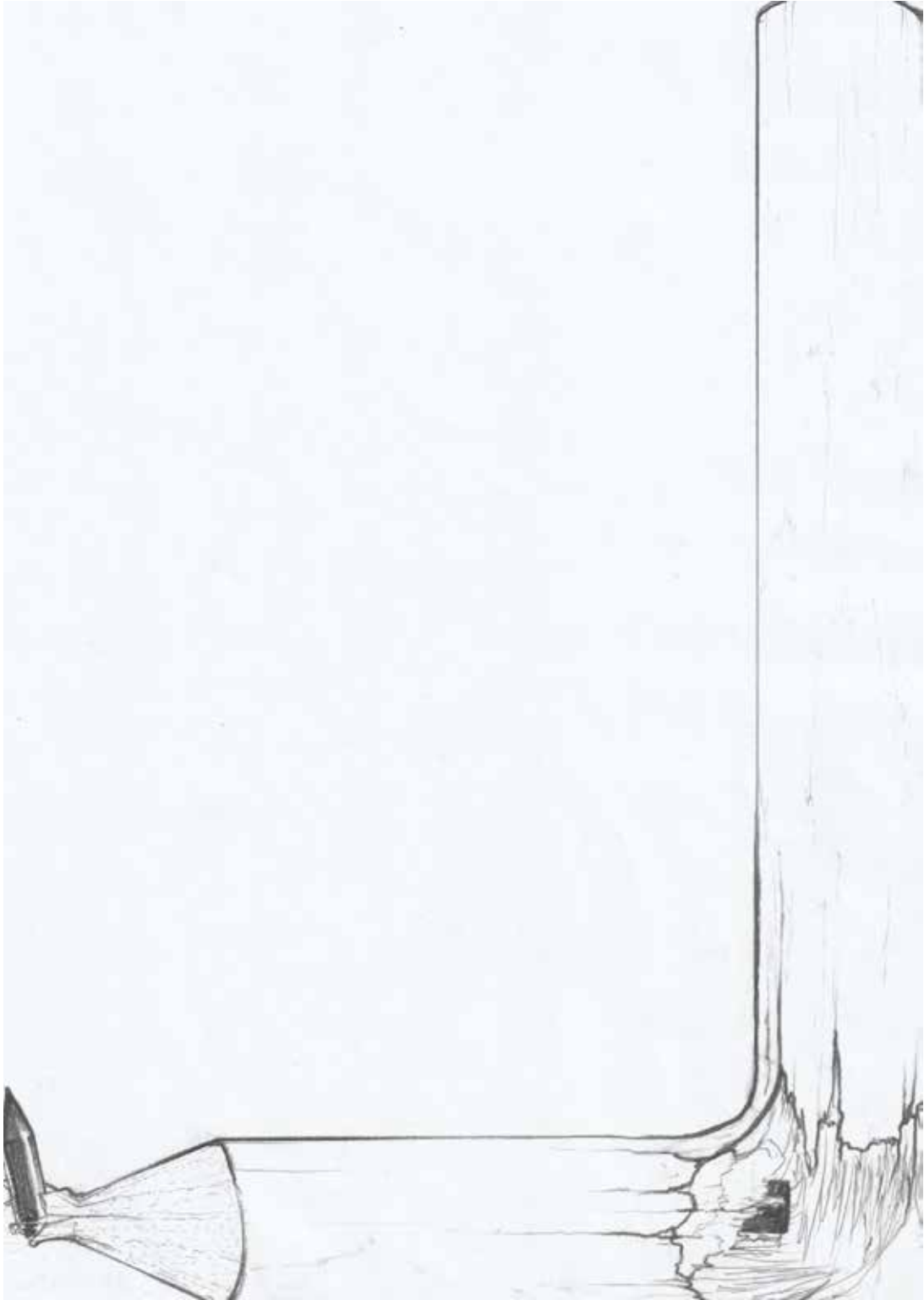
Graphite and coloured pencils on paper, 29,5 x 21 cm  
Unique piece



**Untitled**

2020

Collage and drawing, graphite and coloured pencils on grided envelope paper, 10,6 x 16,3 cm  
Unique piece

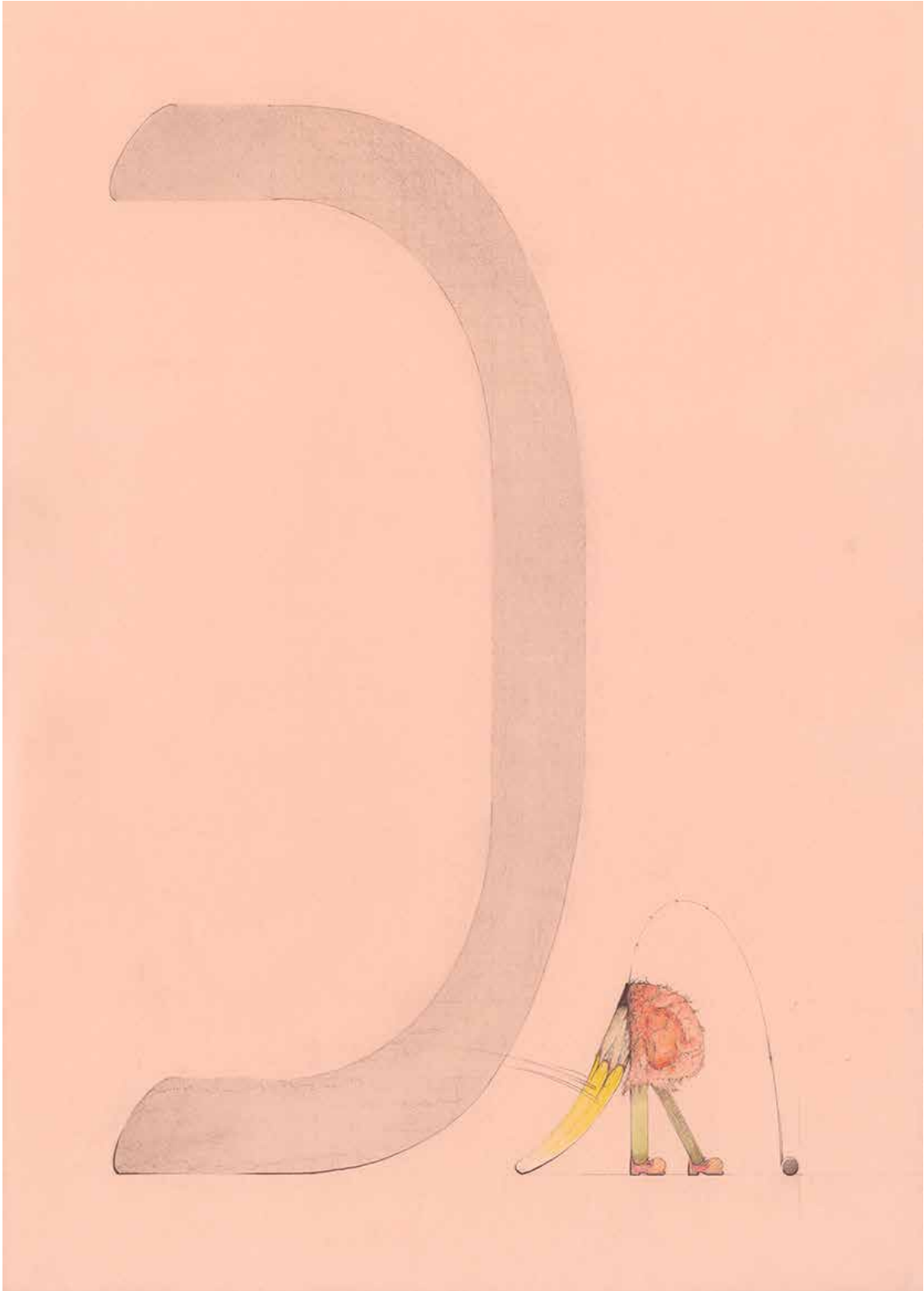


**Untitled**

2020

Graphite on paper, 29,7 x 21 cm

Unique piece



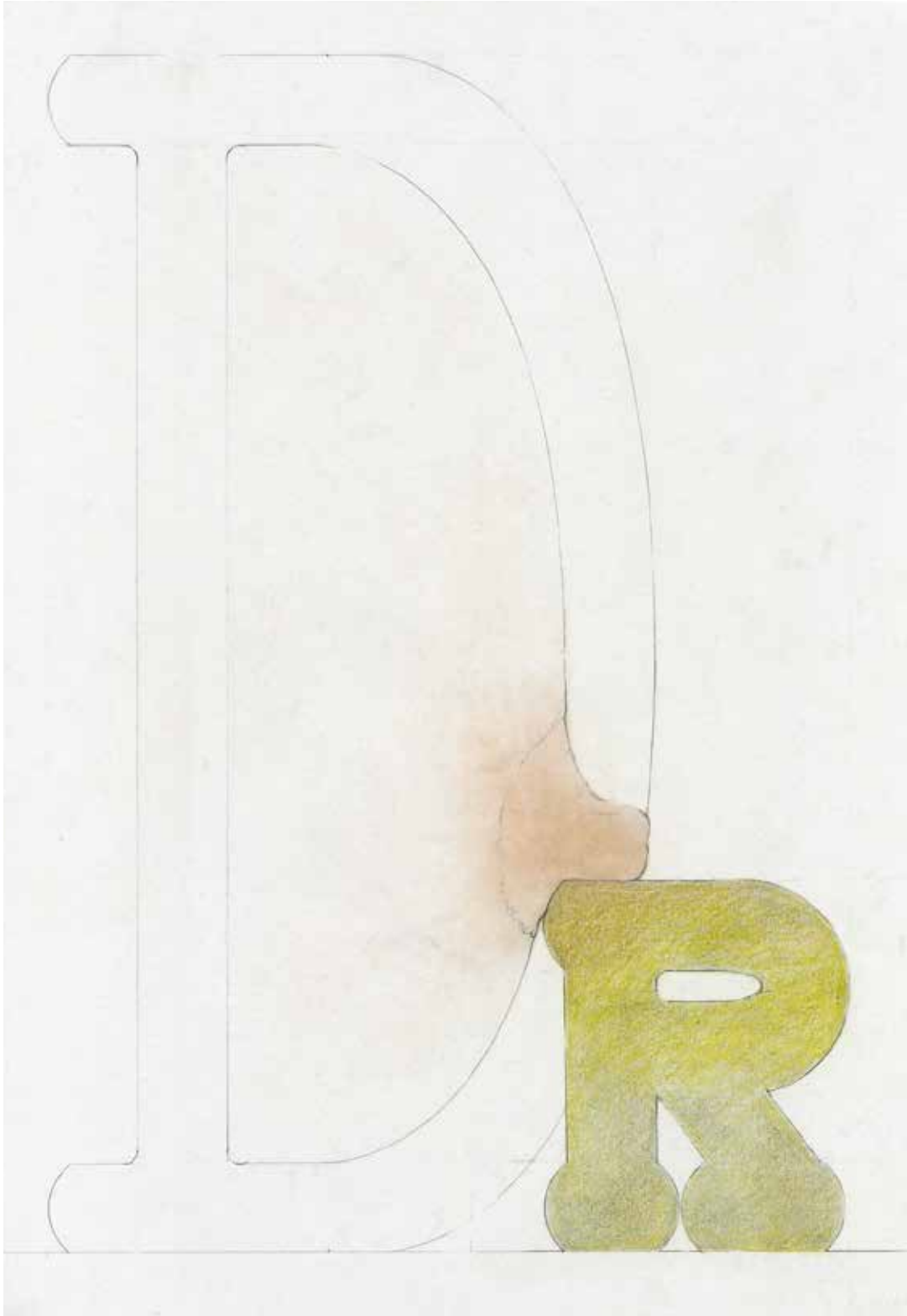
**Untitled**

2021

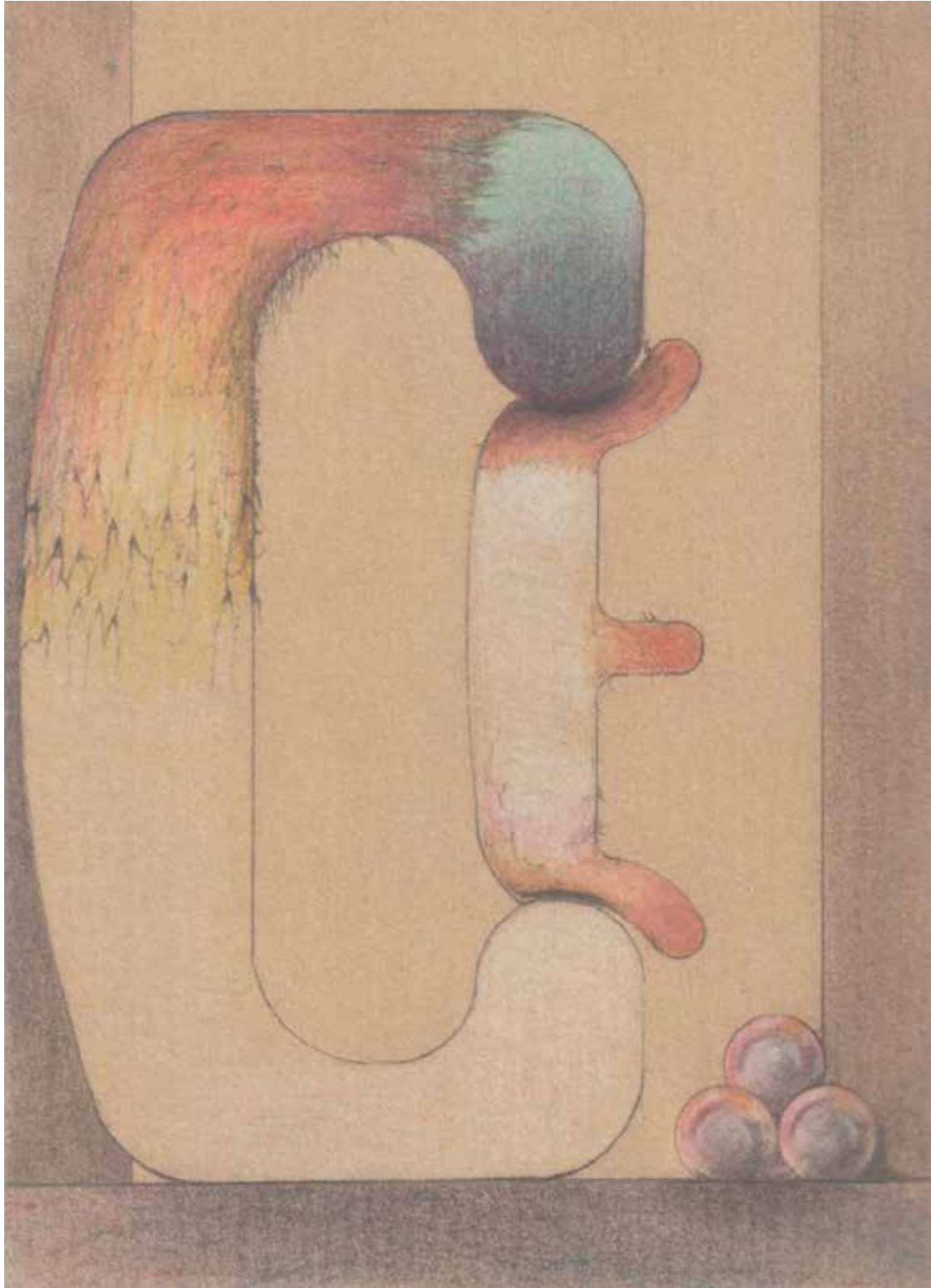
Graphite and coloured pencils on paper, 41,4 x 29,4 cm

Unique piece





**Dr**  
2018  
Graphite and coloured pencils on paper, 29,7 x 21 cm  
Unique piece

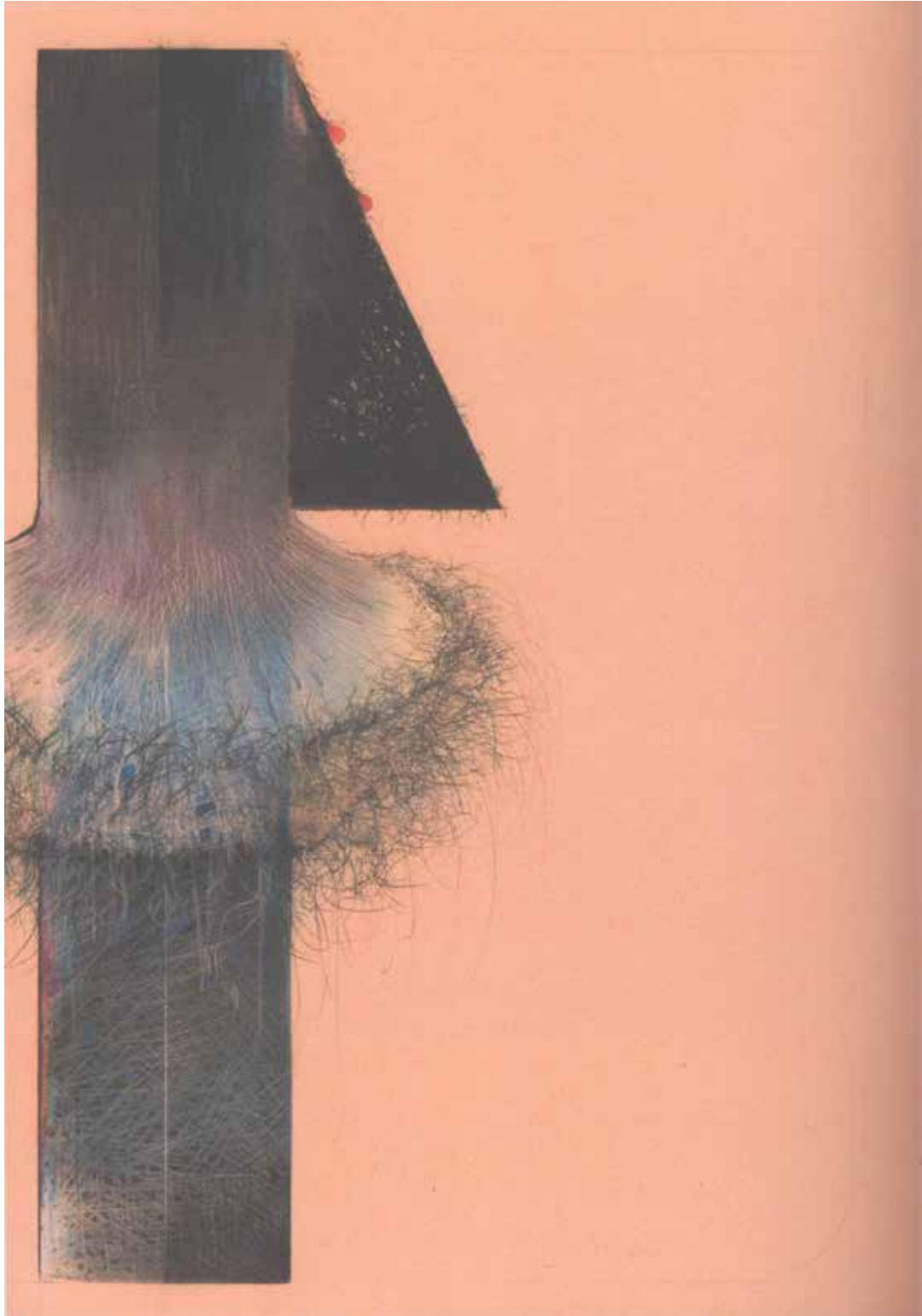


**Untitled**

2020

Graphite and coloured pencils on paper, 14,5 x 10,4 cm

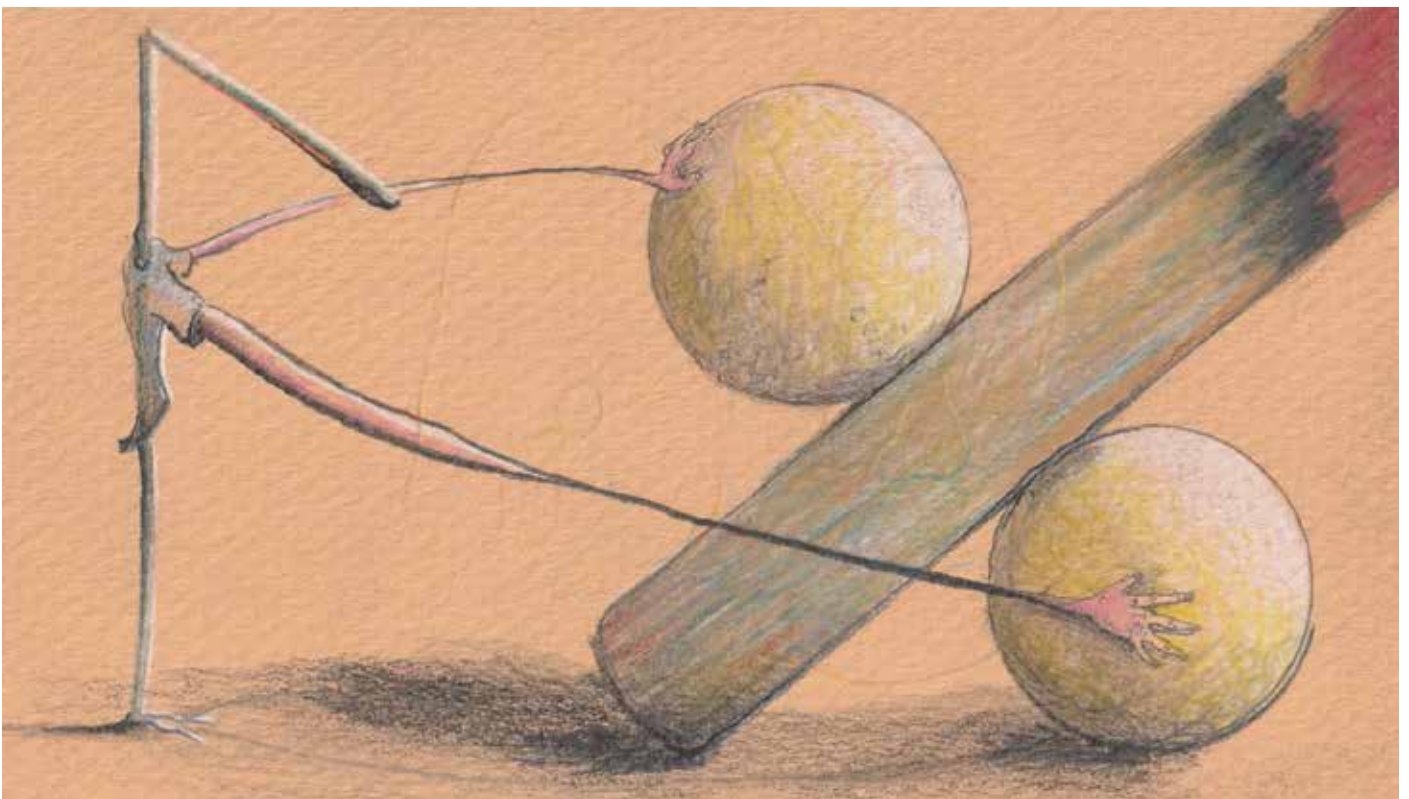
Unique piece



**Untitled**

2021

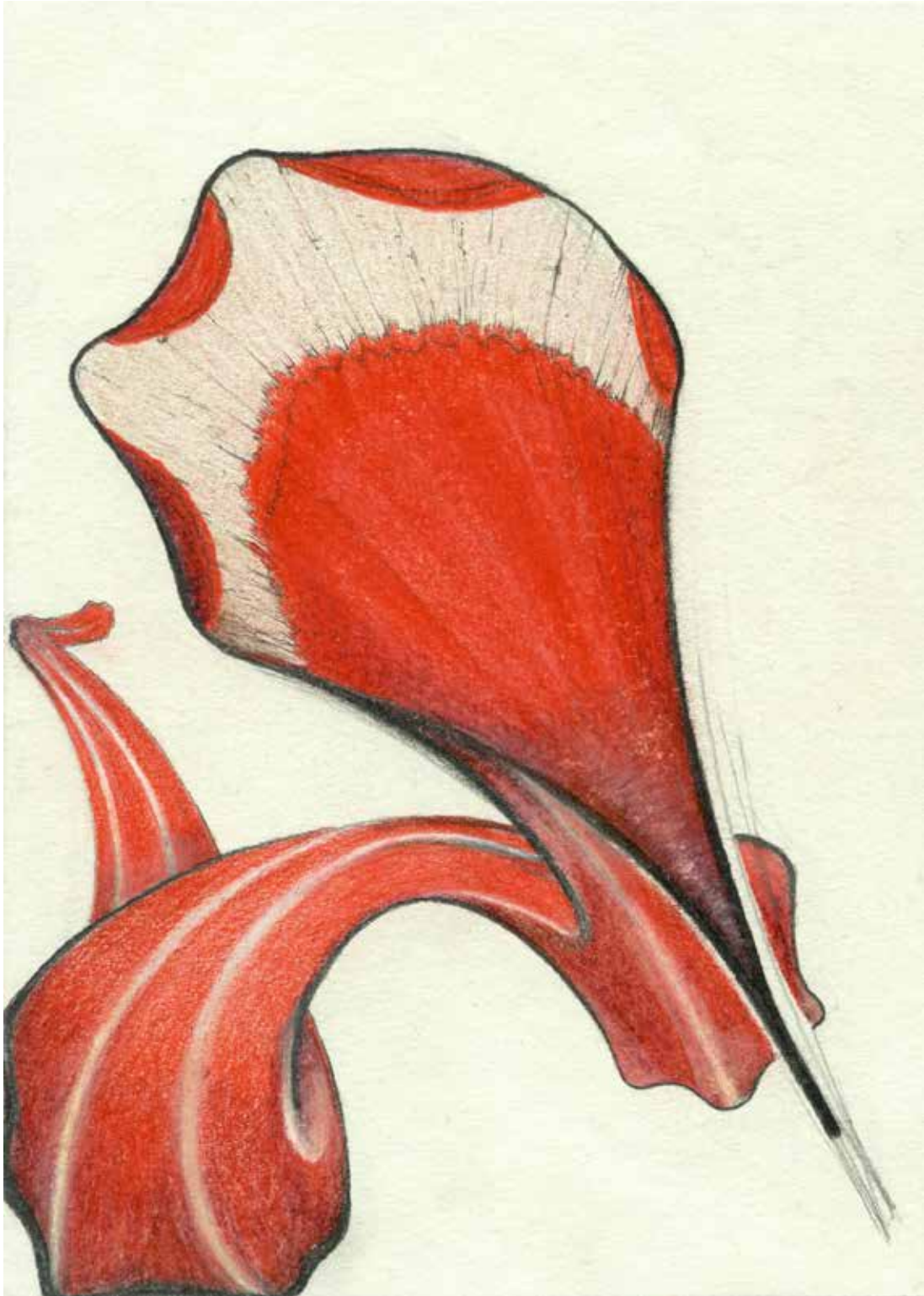
Graphite, coloured pencils and oil pastels on paper, 42,3 x 29,5 cm  
Unique piece



**Untitled**

2020

Graphite and coloured pencils on paper, 8 x 14,3 cm  
Unique piece



**Untitled**

2021

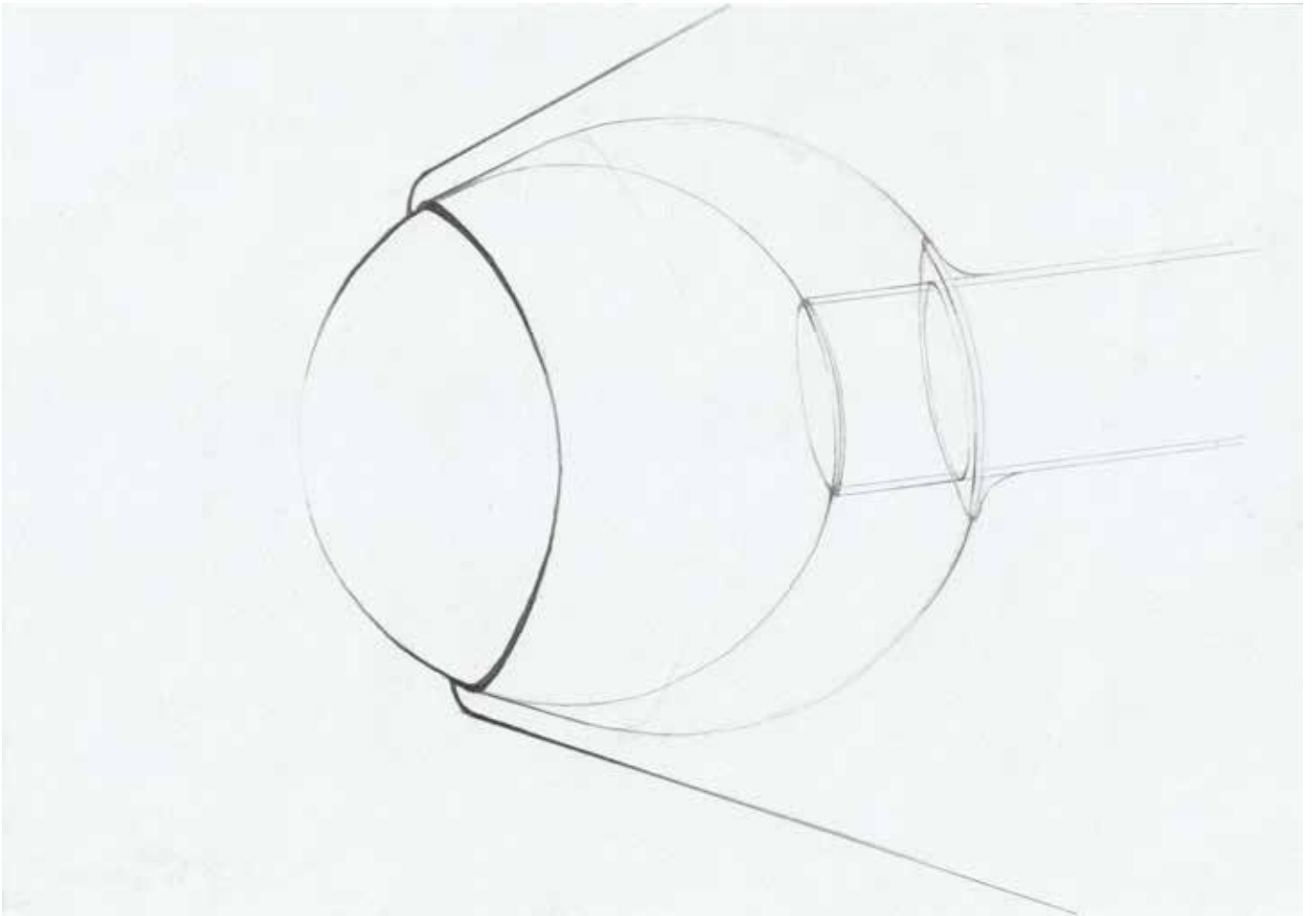
Drawing, graphite and coloured pencils on paper, 13,8 x 19,3 cm

Unique piece



**Untitled**  
2021

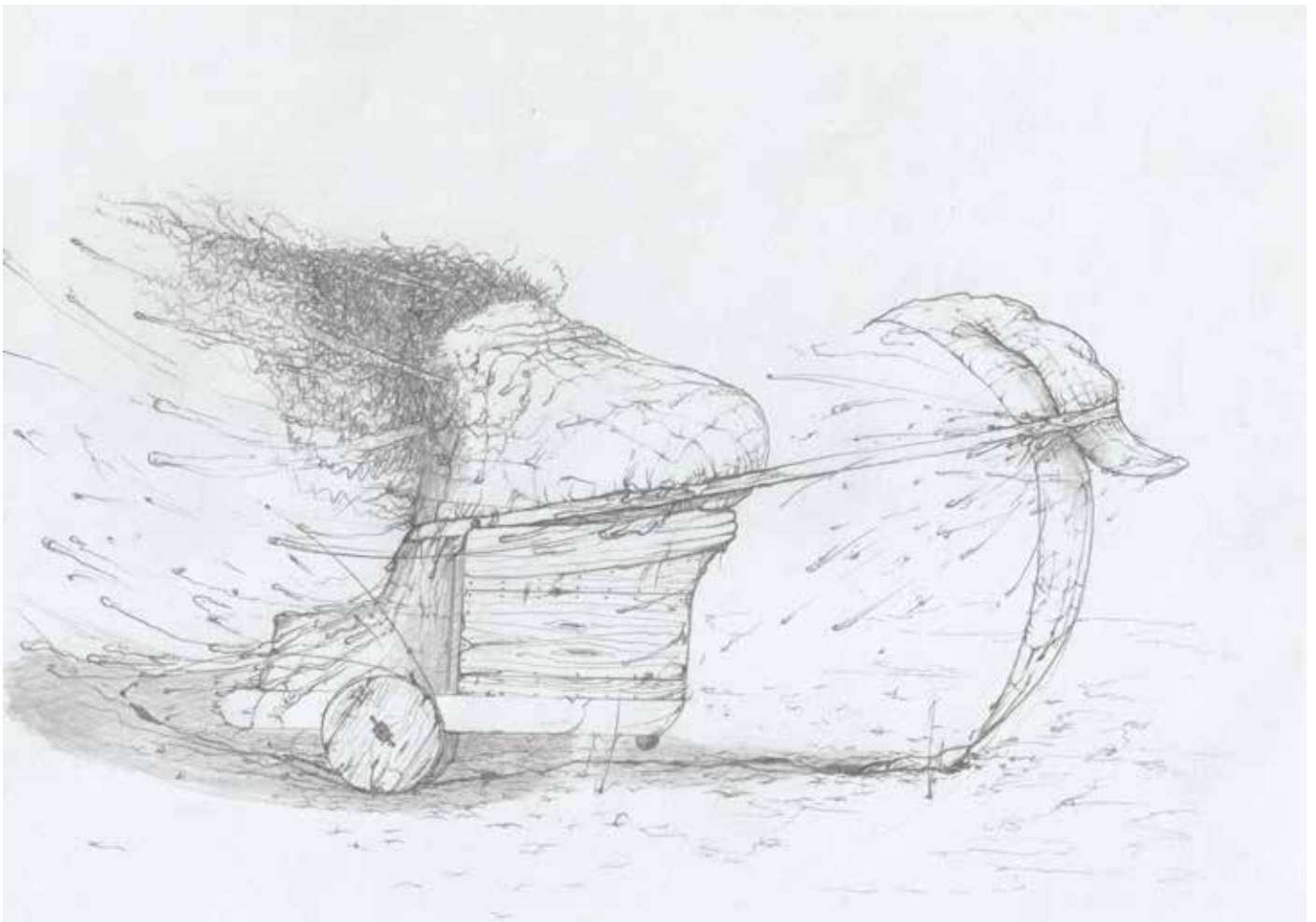
Drawing, graphite and coloured pencils on an orange paper, 14,2 x 10,5 cm  
Unique piece



**Untitled**

2020

Drawing, graphite on paper, 14,8 x 21 cm  
Unique piece



**Untitled**

2020

Drawing, graphite on paper, 14,8 x 21 cm

Unique piece





**Untitled**

2020

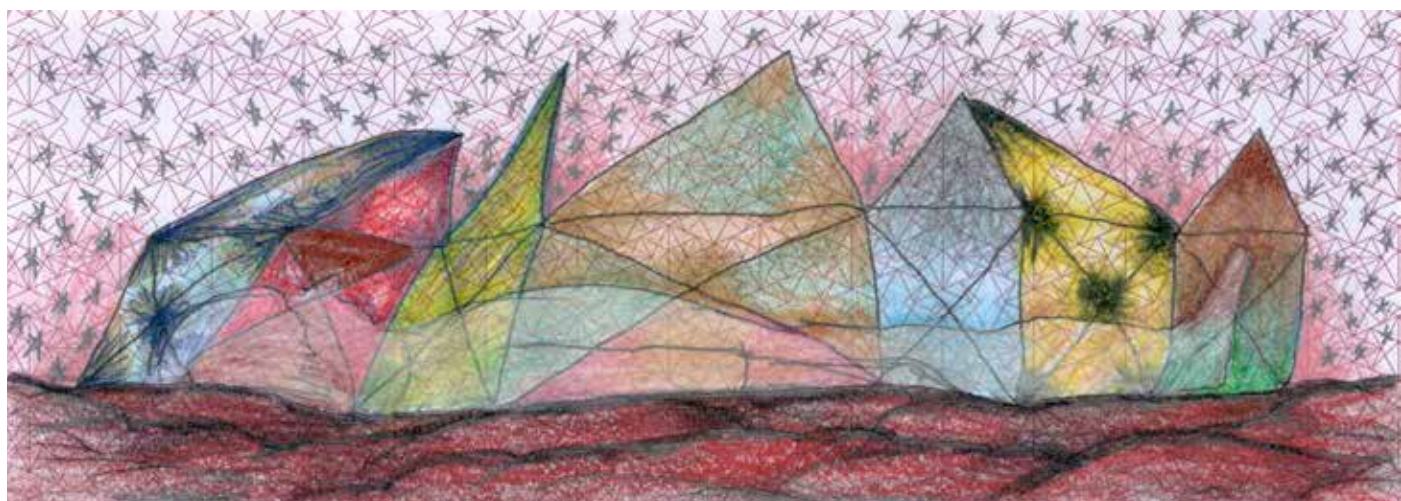
Drawing, graphite, marker pen and coloured pencils on paper, 12,9 x 21 cm  
Unique piece



**Untitled**

2020

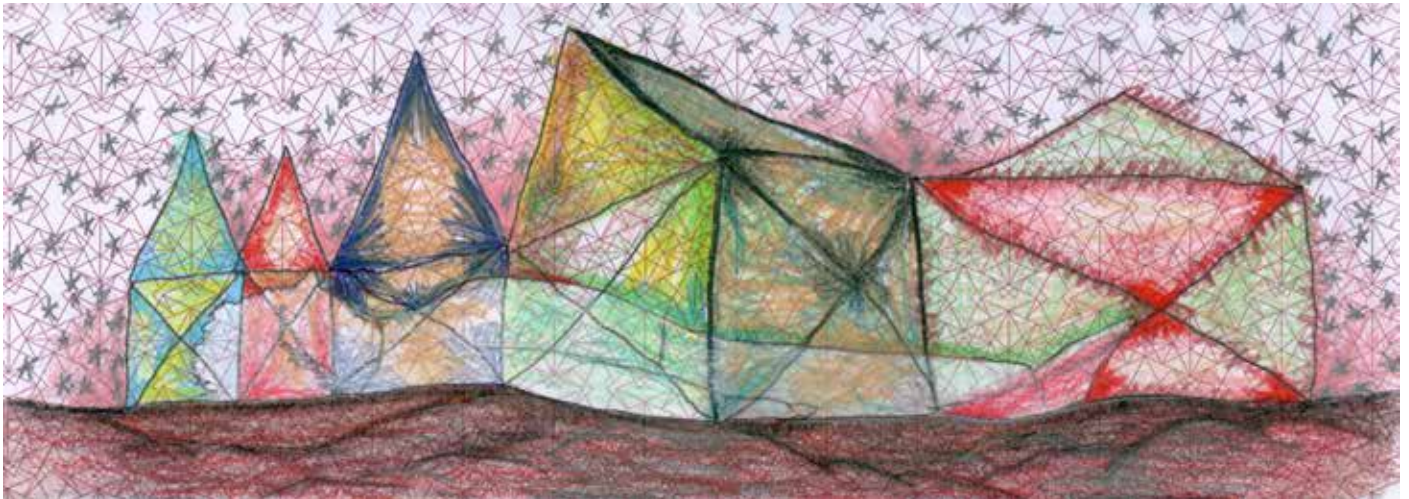
Drawing, graphite on paper, 29,7 x 21 cm  
Unique piece



**Untitled**

2019

Drawing, graphite and coloured pencils on a framed envelope paper, 6,7 x 18,4 cm  
Unique piece



**Untitled**

2019

Drawing, graphite and coloured pencils on a framed envelope paper, 6,6 x 18,4 cm  
Unique piece



**Untitled**

2019

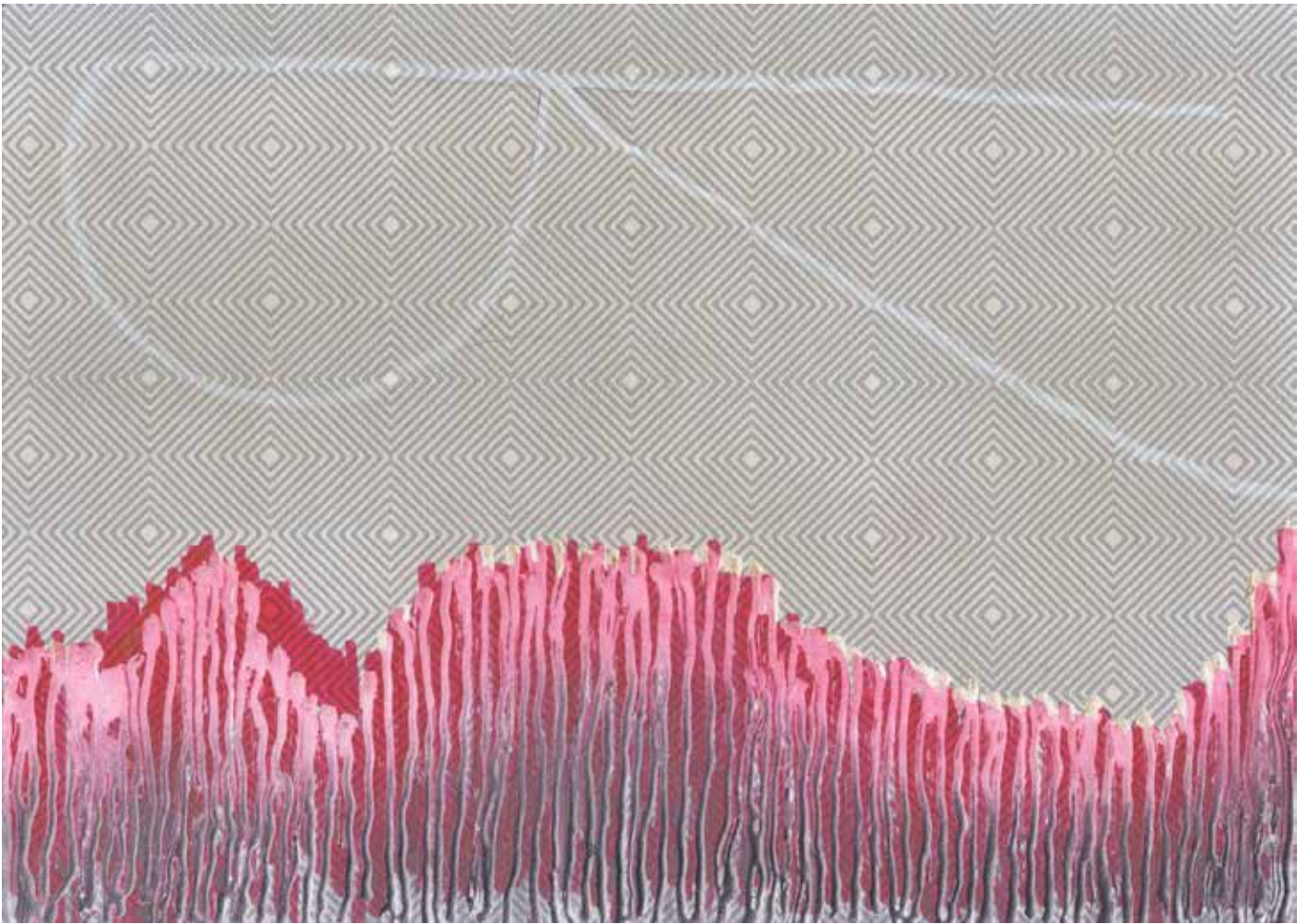
Collage, aluminium (chocolate wrapping) on a framed envelope paper, 8 x 11,2 cm  
Unique piece



**Untitled**

2019

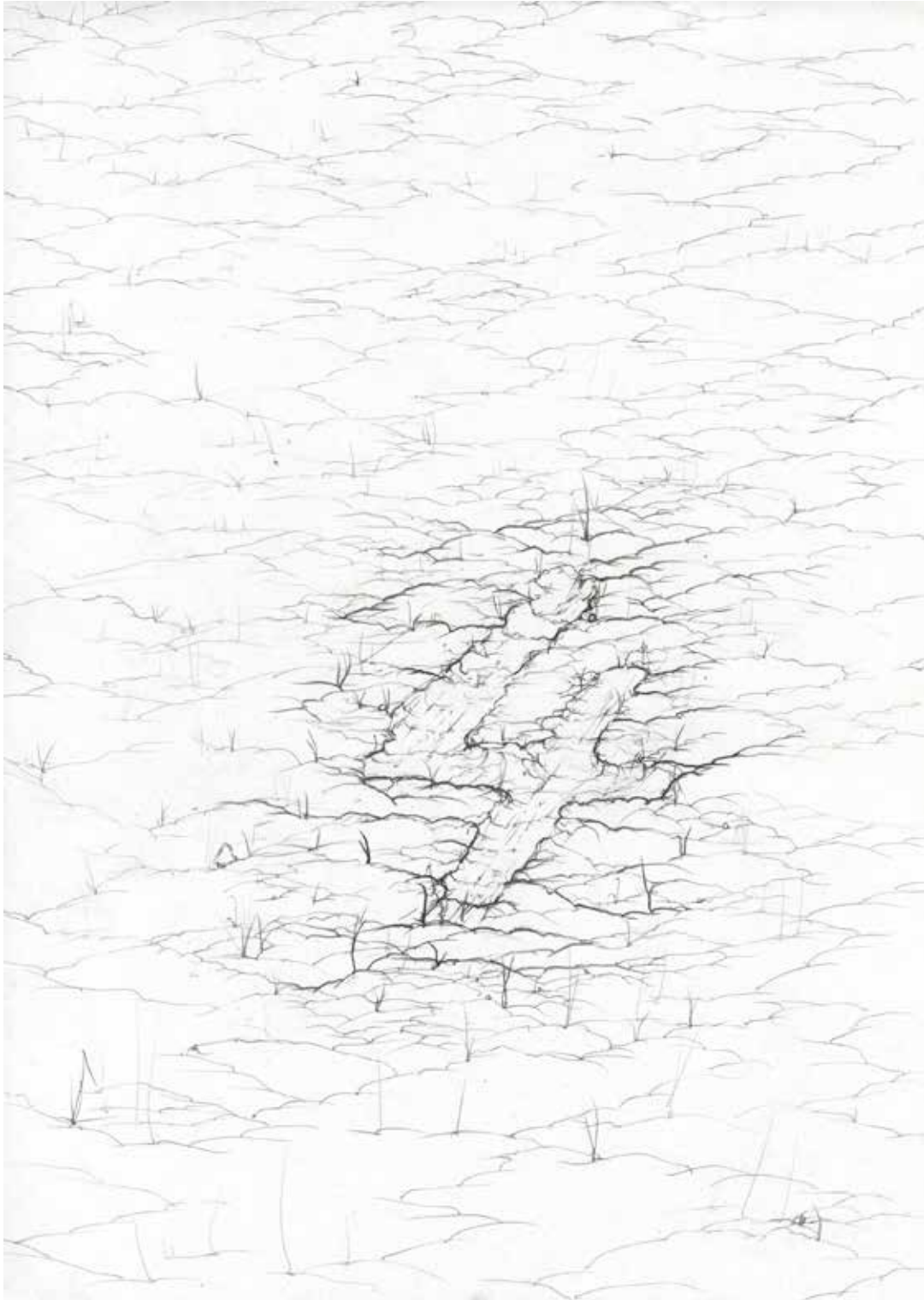
Collage and drawing, graphite and coloured pencils  
on a framed envelope paper, 21 x 12,7 cm  
Unique piece



**Untitled**

2019

Drawing, graphite, coloured pencils and correction fluid on a framed envelope paper, 10,4 x 14,5 cm  
Unique piece

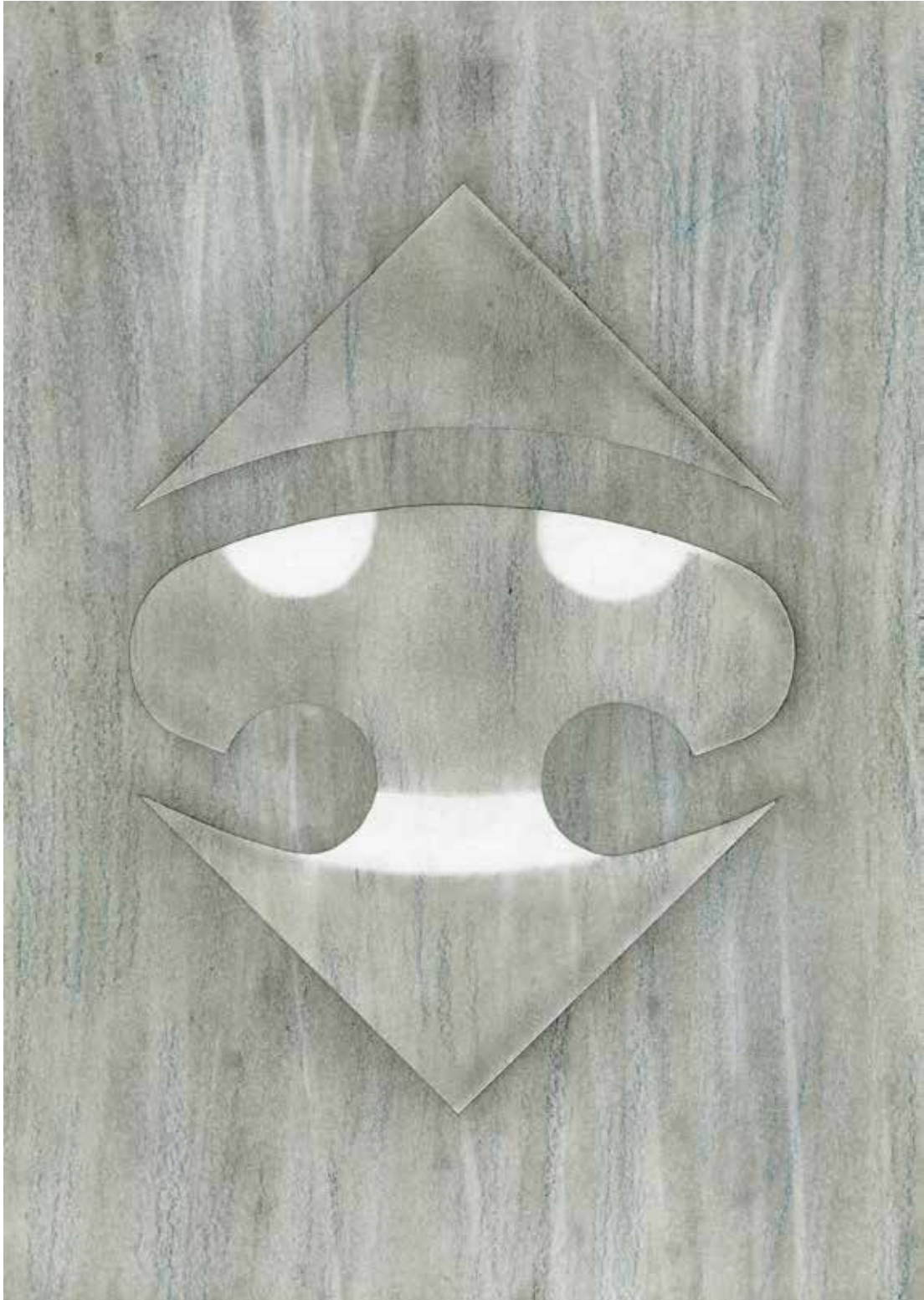


**Untitled**

2018

Drawing, graphite and coloured pencils on paper, 29,7 x 21 cm  
Unique piece



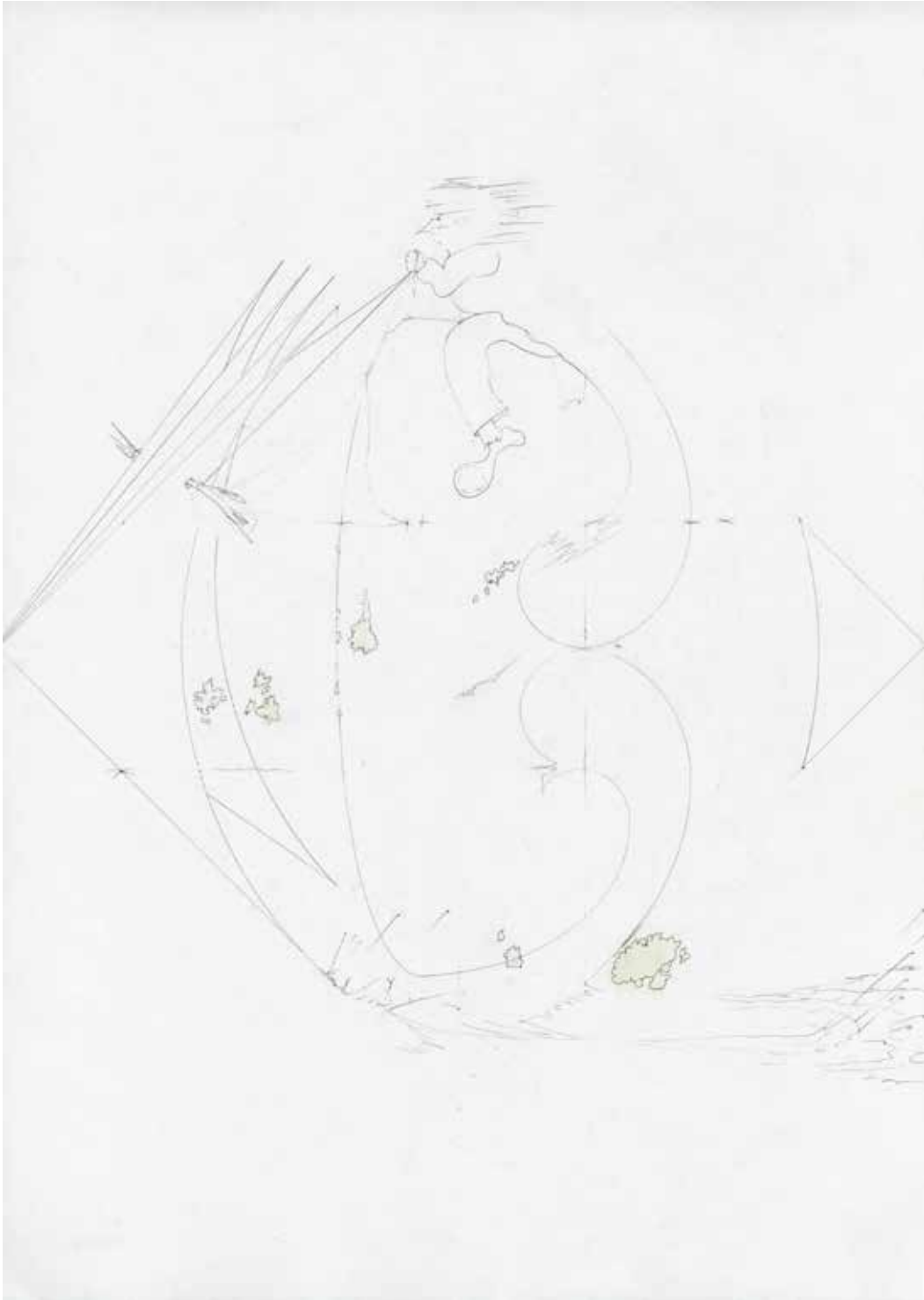


**Untitled**

2018

Drawing, graphite and coloured pencils on paper, 29,7 x 21 cm

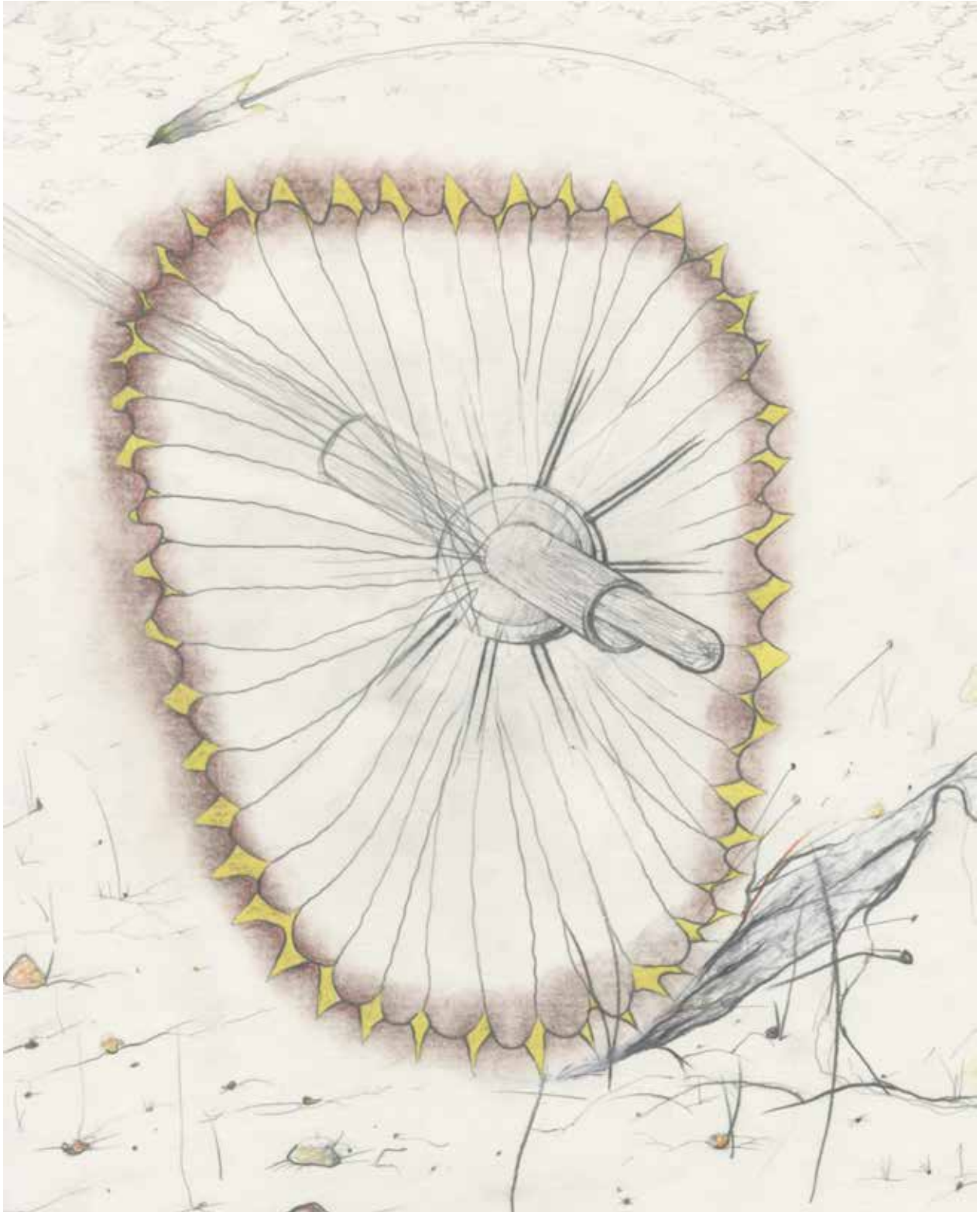
Unique piece



**Untitled**

2018

Drawing, graphite and coloured pencils on paper, 29,7 x 21 cm  
Unique piece



**Untitled**

2018

Drawing, graphite and coloured pencils on paper, 35,5 x 27,7 cm

Unique piece